

Lex-Care Needs You

Locals Helping Locals

Have you ever found yourself asking “How can I help those in my community who are going through a difficult time”? If so, we are glad you have found us. We would ask you to partner alongside us in order to make a difference.

Corporations are encouraged to make charitable donations. Gather a group of coworkers to sponsor a family in need. Or, sponsor a specific need. For example, mortgage professionals have helped families stay in their home. This is a wonderful way that our community can step up to help Lex-Care help local families in need.

Contributions may be sent to:

Lex-Care, Inc.
P.O. Box 1328
Lexington, KY 40588

Phone: 859.227.2765
Fax: 859.422.5993

GetHelp@LexCare.org
www.LexCare.org

How We Help

Family Testimonial

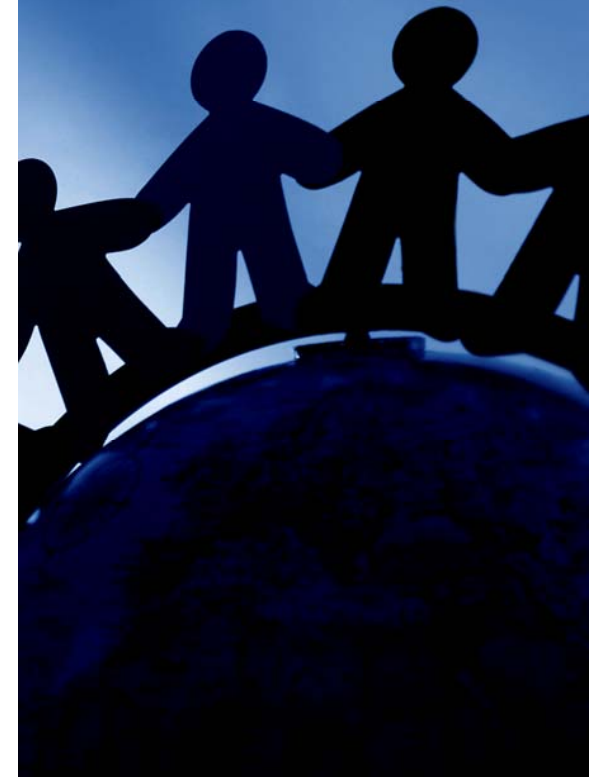
“I wanted to take a moment to say thank you to Lex-Care for helping me cover my December rent. In my forty seven years, never had I faced the sheer onslaught of disaster as I did this past September when I had my heart attack and lost most of my belongings in a flood while in the hospital. I have been touched by the amount of support and kindness that has been shown to me, and I hope that the donor or donors who assisted me with my rent will know how much their gift has meant, and how much it helped me get back on my feet.”

–“Make a Difference” Column Recipient

90% of donations go to assist clients.
All contributions are tax deductible.

Lex-Care

Locals Helping Locals



Who We Are

Locals Helping Locals

An organization of professionals dedicated to addressing the unmet needs of the community through emergency funding, in-kind assistance, and partnerships with other agencies.

Lex-Care brings together a comprehensive network of social service providers and volunteers to fulfill unmet needs within our local community. Lex-Care coordinates 285 health and social service workers, representing 161 agencies across the Bluegrass.

Through these partnerships, we have been able to touch the lives of hundreds of families in our community.



Projects

Financial Assistance Fund

Lex-Care maintains a fund to assist people with financial and material needs when no other source is available. The fund is supported solely by private contributions, which are received in response to Lex-Care's Herald Leader column *Make A Difference*. In 2009, sixty two families benefited from this program.

Lex-Care Golf Marathon

The *Golf Marathon* is a fun and unique way to raise money for families within our community who need help. 100 holes of golf in 1 day. It is a chance for the most fanatical golfers to hit the links and play until their hearts are content. Not a golfer? There are other ways for you to get involved. Being a caddie is an excellent way for you to participate in the day's events as well as make a contribution to the cause. We also encourage you to sponsor a team or an individual hole. Any way in which you choose to participate will support a local family in need.

Projects

Lex-Care Rides



The Ride program provides transportation assistance to persons in need of transportation for legitimate, necessary reasons when no other means are available. In 2009, Lex-Care Rides provided sixty three bus passes to clients in need. This program keeps citizens employed, makes medical / counseling appointments possible, and allows recipients to find consistent work.

Diaper Fund



Lex-Care purchases disposable diapers in bulk and distributes them to Cardinal Valley Center, Salvation Army, and Gainesway Community Empowerment Center. Families needing an emergency supply of diapers may contact one of these agencies. In 2009, 7,671 diapers were given out to 371 families. Diapers and financial contributions are accepted.